



## PROBLEMS WE SOLVE

- Set up of advanced risk management protocols to limit the impact of COVID-19 on your workplace
- Detecting the potential presence of the virus within teams on a site within the guidelines of healthcare authorities in each country
- Testing for the virus on all types of environmental surfaces in the workplace
- Relevant product testing and self-assessment
- Provision of e-learning tools

# 10 SECOND OVERVIEW

- Direct qualitative SARS-CoV-2 detection for your workforce/employees
- Antibody Testing against SARS-CoV-2 to determine if it is acceptable for an employee to return to work
- Surface Testing to optimise your risk management programme and determine the effectiveness of cleaning and decontamination methods
- Wastewater Testing to determine the potential presence of the virus within your teams and environment
- Product testing, certification and inspection focused on medical and protective equipment, and disinfectants to ensure they meet the benchmarked quality standards



IF YOU CAN READ THIS, CONTACT US FOR MORE INFORMATION

[COVID-EU@EUROFINS.COM](mailto:COVID-EU@EUROFINS.COM)



### EUROFINS GENOMICS

Anzinger Str. 7a / 85560 Ebersberg, Germany

[support-eu@eurofins.com](mailto:support-eu@eurofins.com)

+49 (0) 7531 81 60 68

[eurofinsgenomics.com](http://eurofinsgenomics.com)



## SAFER@WORK™ PROGRAMME

Comprehensive solutions to keep your staff and customers safer during the COVID-19 pandemic





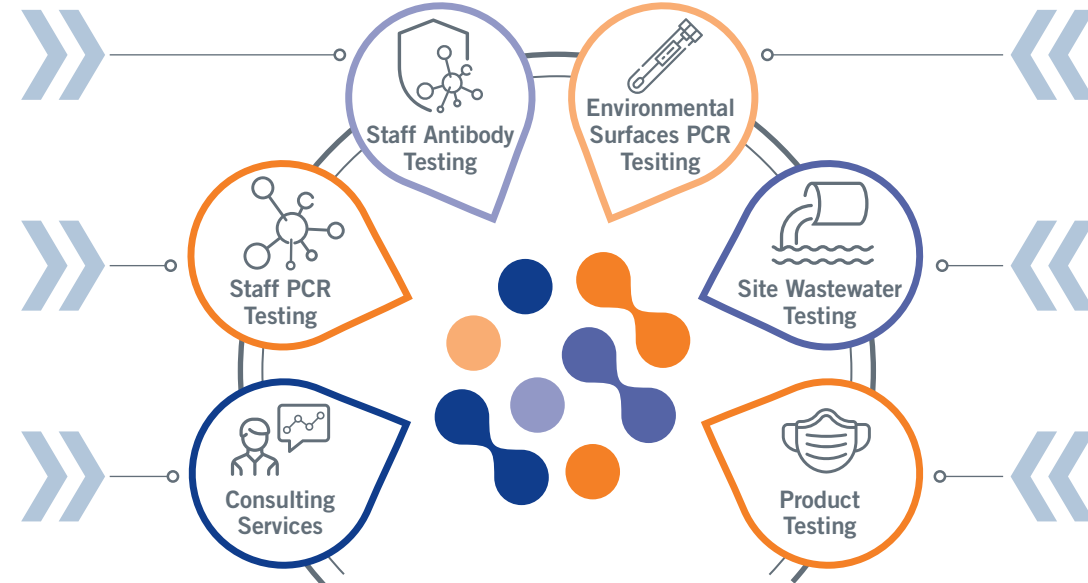
SCAN THE QR CODE AND DISCOVER PROACTIVE SOLUTIONS TO CONTRIBUTE TO THE SAFETY OF YOUR STAFF, CUSTOMERS AND CONTINUATION OF YOUR BUSINESS.

## COMPREHENSIVE SOLUTIONS WITH SAFER@WORK

**Determine** if your employees were exposed to SARS-CoV-2. Expedite your immune staff getting back to work.

**Detect** the virus in your workforce. Determine whether it is safe for an individual to remain at or come back to work.

**Tick** all the boxes when it comes to your monitoring programs. We help design the most appropriate protocols and action plans.



**Detect** the virus on all types of surfaces. Gain confidence in your cleaning & decontamination methods.

**Add** another indicator related to potential presence of the virus within your teams by regular wastewater testing.

**Eurofins** provides testing, inspection and regulatory services focused on medical and protective equipment.

**SAFER@WORK™**

Comprehensive solutions to keep your staff and customers safer during the COVID-19 pandemic

## EUROFINS IS...

a world leader in the provision of clinical diagnostics, forensic, and pharmaceutical, food and environmental laboratory testing services.

Utilising our scientific experience, we developed a range of SARS-CoV-2 tests in response to the Coronavirus pandemic.